

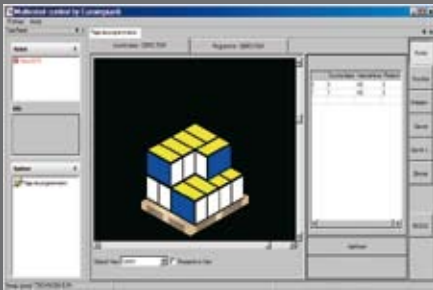
# 603



The SKILLED 603 is a 4 axis articulating type robot with 360 degree work area access. It is the best of the European Technology: German innovative "muscle" from KUKA with components in carbon fiber composite (CRP) for lightness with strength and the electronic & software "brains" from SKILLED by EUROIMPIANTI for accuracy and convenience.

#### Technical Features:

Structure:	Articulating
Freedom degree:	4 axes
Max axes speed:	A1 = 105°/sec
	A2 = 105°/sec
	A3 = 95°/sec
	A6 = 300°/sec
Motors:	Brushless
Reduction gears:	Zero backlash crown wheels
Payload:	180 Kg (397 lb)
Supplementary load arm:	50 Kg (110 lb)
Supplementary load on rotating column:	200 Kg (441 lb)
Total distributed load:	430 Kg (948 lb)
Repeatability:	± 0,25 mm (0,0098")
Cycles/hour:	Max 900
Static robot load:	1200 kg (2645 lb)
Environment:	+ 5°C /55°C (+41°F / +131°F)
Protection degree:	IP 54
Pressure:	Min 0,6 Mpa



# Software and controls

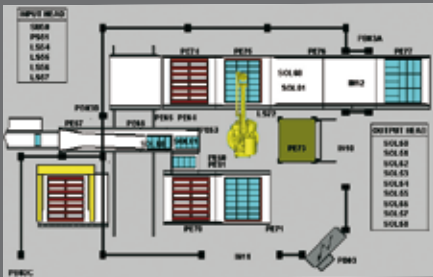
## OPERATOR INTERFACE (HMI)

**INDUSTRIAL COMPUTER with TFT screen, allows to perform the following operations:**

- Starting the robot;
- Manual controls;
- Input/Output test;
- Visualization of alarms and events;
- To select palletizing programs;
- To program the layout and setup the robot;
- To create the pallet patterns in selfprogramming mode;
- To automatically generate palletizing patterns according to the features of the gripper;
- To create a library of unlimited number of palletising programs;
- To display both graphic synoptics of system and working pallet;
- To carry out a tailored statistics list of production data with local printer (optional);
- Service support via VPN/modem (optional);
- Interface TCP/IP (optional).



**EUROIMPIANTI software** can be installed on any PC supplied by the Customer under a Windows operating system (2000, XP VISTA or any upgraded versions)



**CONTROL UNIT:** Fanless PC-based unit with real time software package and PLC programming according to IEC -61131-3.

### SKC 600C

CPU	INTEL CELERON M 600 Mhz 512 Kbyte cache
RAM	512 Mbyte
Compact Flash	1 Gbyte
Non volatile RAM	128 Kbyte
<b>Communications</b>	<b>FieldBus:</b> 2 CAN 20B Port. <b>Network:</b> 2 10/100 Ethernet port. <b>Serial:</b> 2 RS232 + 2 programmable RS232/RS485/RS422
<b>USB 2 version 2 Power supply</b>	24Vdc - 2 A. 0-45°C
Temperature Range	10-50% non condensing
Humidity	

### ADDED OPTIONS:

Interface PROFIBUS DP SLAVE (Siemens)	
Interface DEVICENET (Allen Bradley)	
Interface MODICON MODBUS (Télemécanique)	

# Electrical System



## MAIN ELECTRIC SPECIFICATIONS:

Robot's power consumption:	15 KW
Power requirements:	220 ÷ 480 Volt ± 15% three-phase 50/60Hz
Auxiliary voltage:	24 V DC
In/Out PLC voltage:	24 V DC
Safety doors:	Photoelectric safety barriers according to CE regulations
Drives :	Brushless connected in CAN OPEN to the computing unit

