

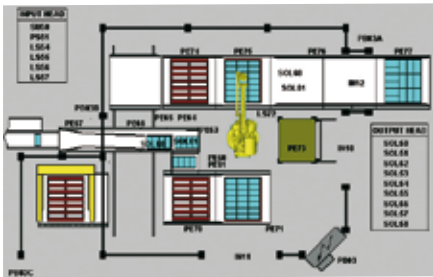
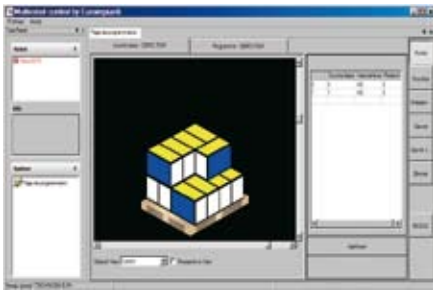
604



The Skilled 604 is an articulated arm robot with 4 interpolated axis and a 360 degree working area access. It is the best of the world technology. The innovative Italian design highlights the powerful and agile aluminium structure; electronics is based on the highest international standards while the software is realized by EUROIMPIANTI with its 35 years specific experience in the palletizing robots sector.

Technical Features:

Structure:	Anthropomorphic
Freedom degree:	4 axes
Max axes speed:	A = 80°/sec
	B = 90°/sec
	C = 90°/sec
	D = 190°/sec
Motors:	Brushless
Reduction gears:	Zero backlash crown wheels
Payload:	400 Kg (881 lb)
Repeatability:	± 0,25 mm (0,0098")
Cycles/hour:	Max 800
Static robot load:	2140 kg (4.718 lb)
Environment:	+ 5°C /+ 55°C (+41°F / +131°F)
Protection degree:	IP 54
Pressure:	Min 0,6 Mpa



Software and controls

OPERATOR INTERFACE (HMI)

INDUSTRIAL COMPUTER with TFT screen, allows to perform the following operations:

- Starting the robot;
- Manual controls;
- Input/Output test;
- Visualization of alarms and events;
- To select palletizing programs;
- To program the layout and setup the robot;
- To create the pallet patterns in selfprogramming mode;
- To automatically generate palletizing patterns according to the features of the gripper;
- To create a library of unlimited number of palletizing programs;
- To display both graphic synoptics of system and working pallet;
- To carry out a tailored statistics list of production data with local printer (optional);
- Service support via VPN/modem (optional);
- Interface TCP/IP (optional).

EUROIMPIANTI software can be installed on any PC supplied by the Customer under a Windows operating system (2000, XP VISTA or any upgraded versions)

CONTROL UNIT: Fanless PC-based unit with real time software package and PLC programming according to IEC -61131-3.

SKC 600C

CPU	INTEL CELERON M 600 Mhz 512 Kbyte cache
RAM	512 Mbyte
Compact Flash	1 Gbyte
Non volatile RAM	128 Kbyte
Communications	FieldBus: 2 CAN 20B Port. Network: 2 10/100 Ethernet port. Serial: 2 RS232 + 2 programmable RS232/RS485/RS422
USB 2 version 2 Power supply	24Vdc - 2 A.
Temperature Range	0-45°C
Humidity	10-50% non condensing

ADDED OPTIONS:

Interface PROFIBUS DP SLAVE (Siemens)	
Interface DEVICENET (Allen Bradley)	
Interface MODICON MODBUS (Télemécanique)	

Electrical System



MAIN ELECTRIC SPECIFICATIONS:

Robot's power consumption:	20 KW
Power requirements:	220 ÷ 480 Volt ± 15% three-phase 50/60Hz
Auxiliary voltage:	24 V DC
In/Out PLC voltage:	24 V DC
Safety doors:	Photoelectric safety barriers according to CE regulations
Drives :	Brushless connected in CAN OPEN to the computing unit

